

# TrendReader® Express

## Software Specifications

**Type:** Software for JR-1000/1001, Nautilus85/135, and TRH-1000 Data Loggers

TrendReader® Express is an enhanced software package designed exclusively for the JR-1000/1001, Nautilus85/135 and TRH-1000 data loggers. This easy-to-use software incorporates the advantages of simple functionality with advanced features that are normally associated with more expensive data acquisition software.

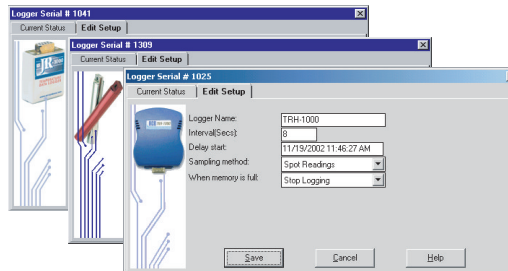


### DOWNLOADING AND COMMUNICATING WITH DATA LOGGER

Downloading and communicating with a JR-1000/1001 or TRH-1000 could not be more simple: all you do is plug the logger into the serial port of your computer and load the software. For the Nautilus85/135, use ACR's IC-101 interface cable (included in software interface package): connect one end to the logger and the other end plugs into the serial port of your computer. No tools, cards or docking stations are required.

### SETTING UP DATA LOGGER

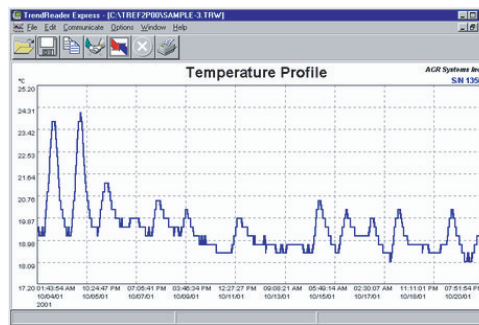
Configure the data logger in the Edit tab of the status window. Set your sample rate, mode and method, change the name of the logger, and activate the start delay. All of this allows for a fast and easy logger setup.



Setup screens

### VIEWING AND EXPORTING DATA

Data can be viewed in a graphical format with TrendReader® Express. With the graph displayed on the screen, you can zoom in to see more details or you can print the graph to any Windows-compatible printer. Use the export function to export your data to other programs for further analysis. Data can be exported in ASCII or CSV formats.



**FEATURES**

- Quick and simple communications
- Fast and easy logger setup
- Presentation-quality graphs
- Zooming capabilities
- Export capabilities

**Model#:** TR-Express  
**Cat#:** 34-0017

TR-Express/Nautilus 01-0275