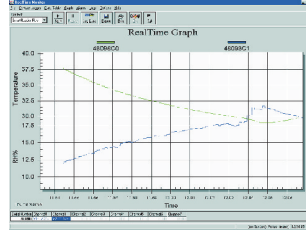


RealTime Graphing Software

Software Specifications

Type: For SmartReader and SmartReader Plus data loggers and PowerWatch

With RealTime Graphing software, you can graph data in real time as a PowerWatch or an ACR data logger records. This software plug-in only works with TrendReader® Standard or PowerWatch software. Both programs (i.e. TrendReader® Standard and RealTime Graphing) must run at the same time in order to view the data graphing in real time.



SETTING ALARM THRESHOLDS

Set alarm thresholds to trigger audio or visual alarms, or to run an alarm macro. The alarm macro can be simulated by using any keystrokes on your computer. RealTime Graphing software allows you to detect problems or potential problems giving you the edge to act before something drastic or damaging occurs.

SAVING AND EXPORTING DATA

Since ACR data loggers and the PowerWatch accumulate historical data, you can still look back and analyze logged information at a later date. Data collected by RealTime Graphing software can also be saved for later use or exported to other Windows® programs (in ASCII format).

FEATURES

- Graph data in real time
- Compatible with:
 - SmartReader 1-9
 - SmartReader Plus 1-10
 - PowerWatch
- Works with ACR data logger networks (local or remote)
- Displays multi-channel data
- User selectable alarms
- Export capabilities

Model#:

Cat#:

RTM-WIN

01-0073